

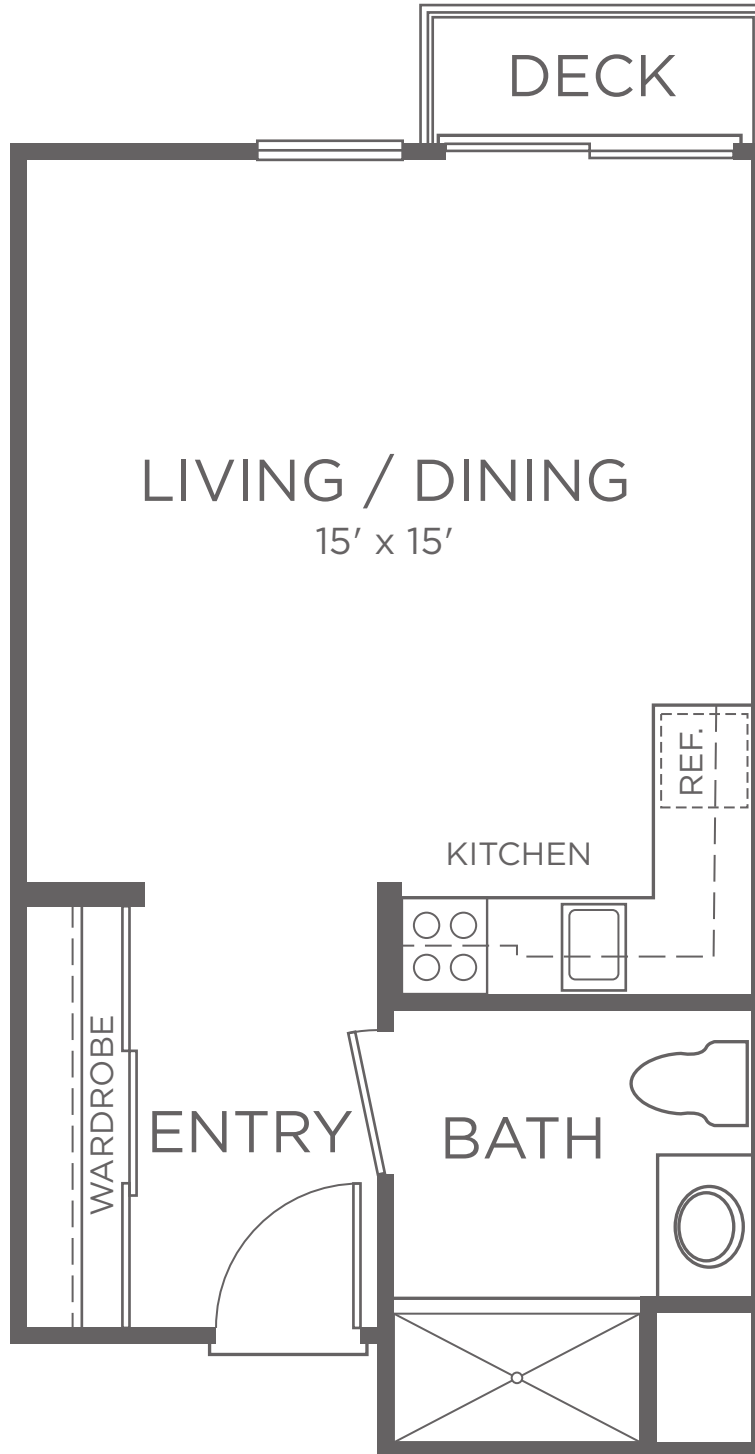


FLOOR PLAN

BRIGHTON

STUDIO | 1 BATH

APPROXIMATELY 431 SF

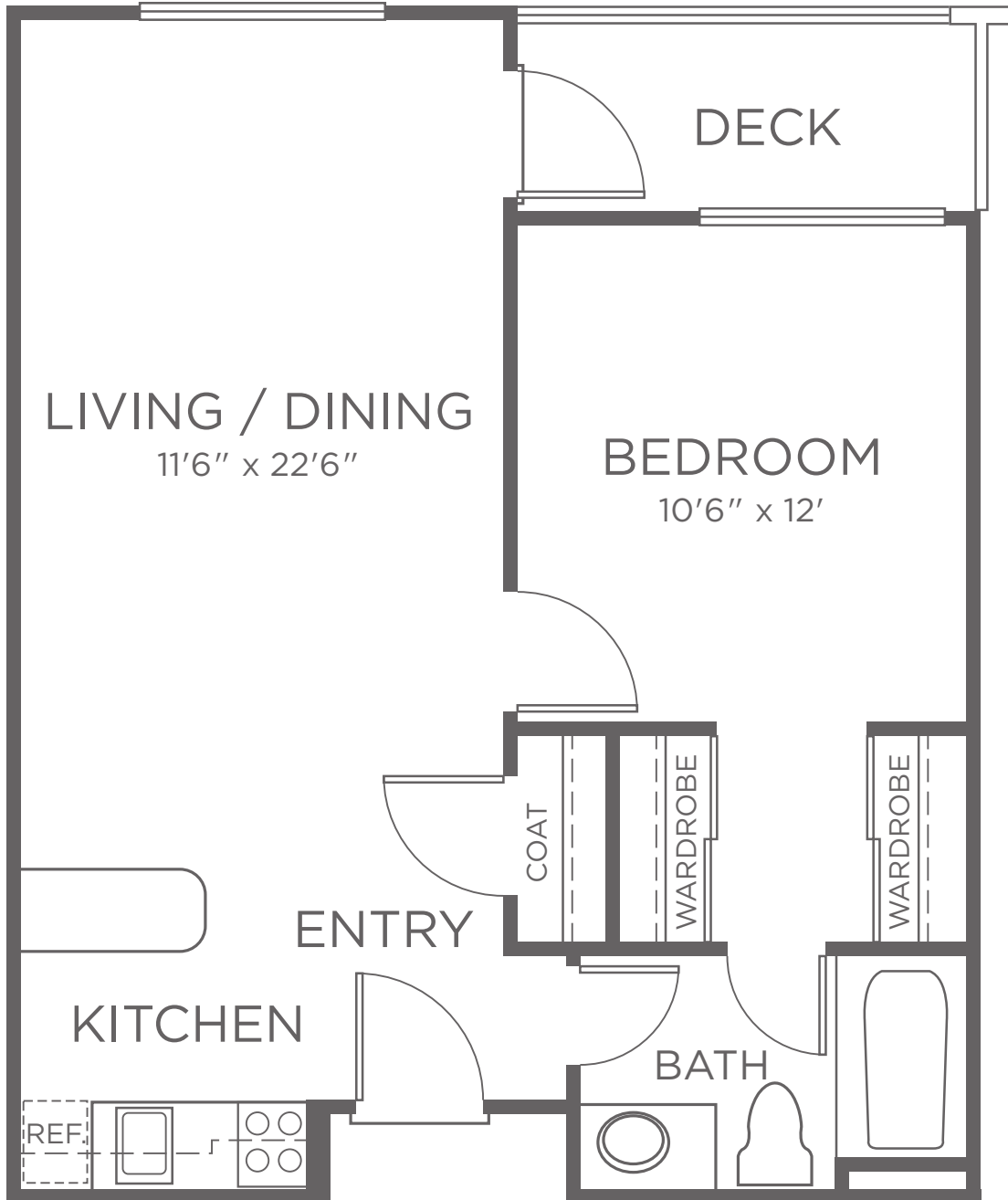




FLOOR PLAN

DEVON A

1 BEDROOM | 1 BATH
APPROXIMATELY 614 SF

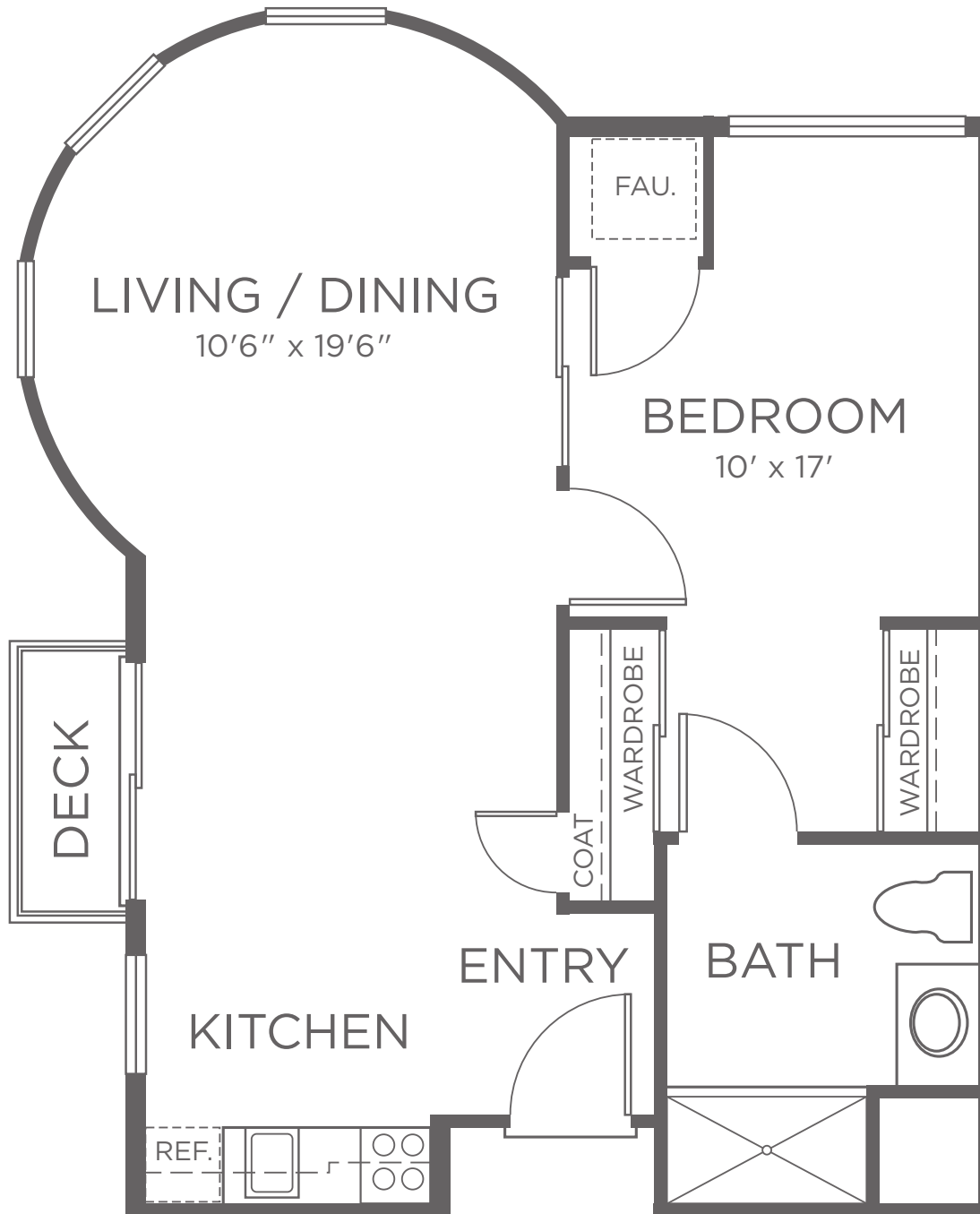




FLOOR PLAN

HAMPTON

1 BEDROOM | 1 BATH
APPROXIMATELY 639 SF

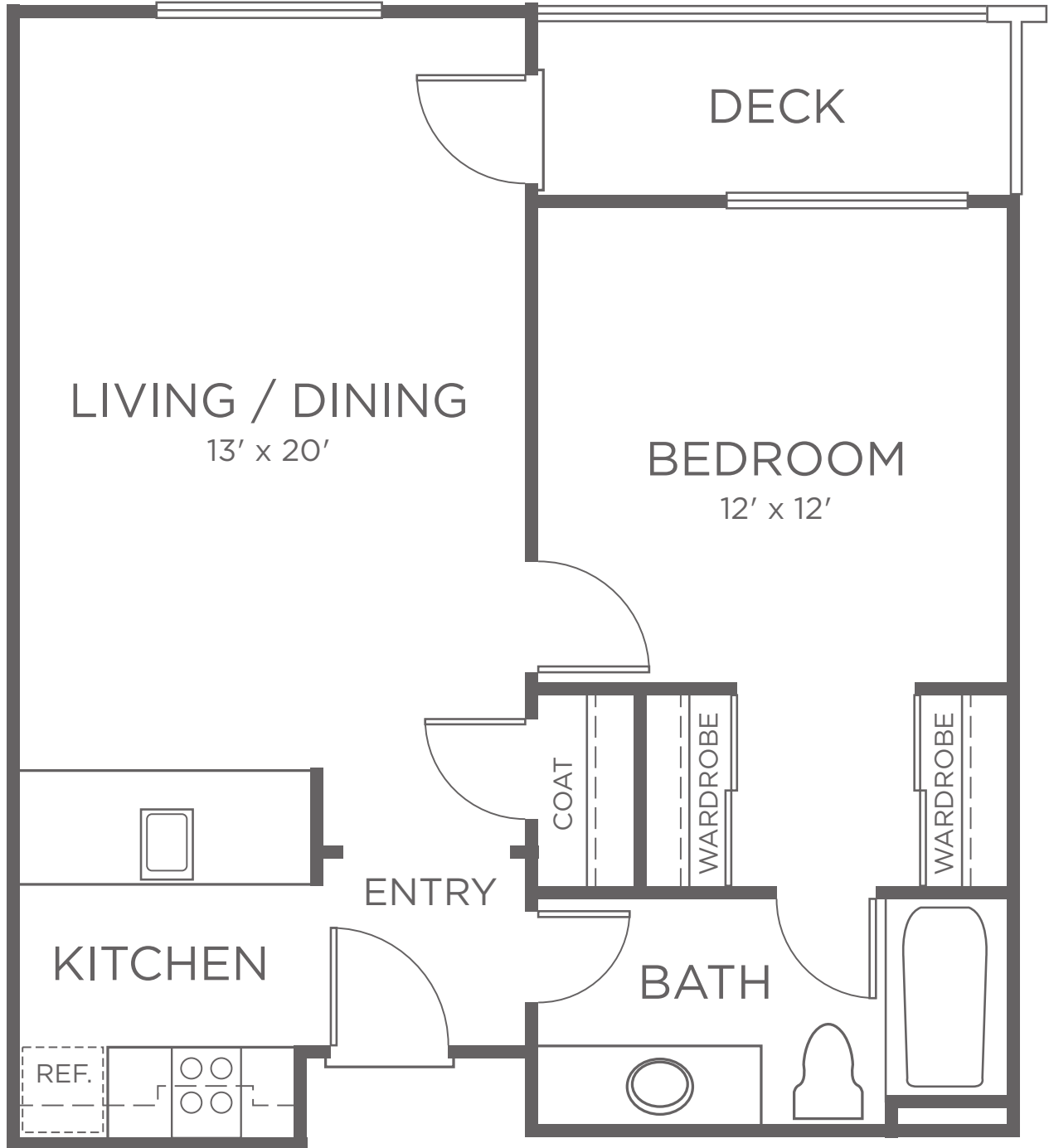




FLOOR PLAN

DEVON B

1 BEDROOM | 1 BATH
APPROXIMATELY 680 SF

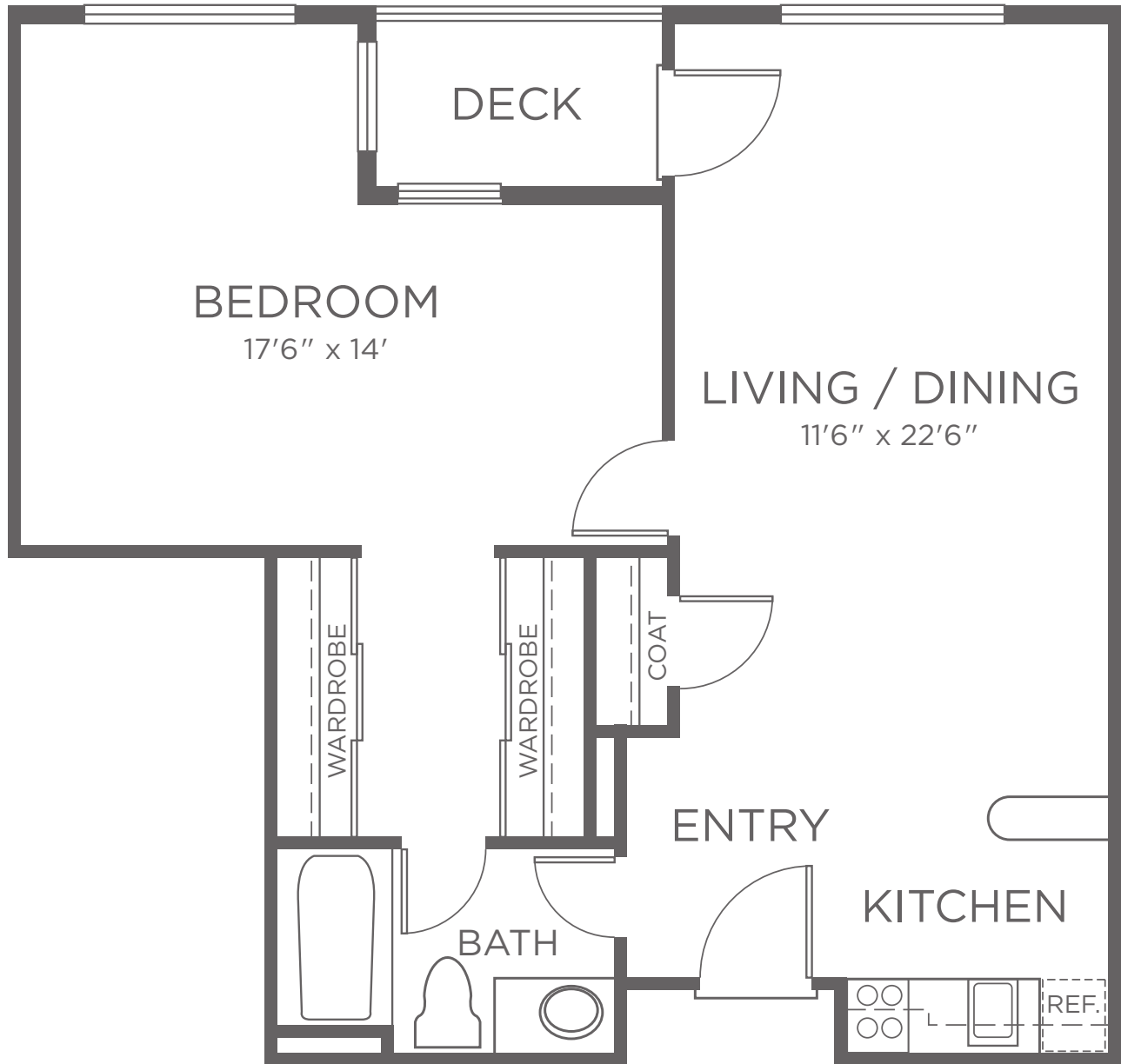




FLOOR PLAN

DEVON C

1 BEDROOM | 1 BATH
APPROXIMATELY 733 SF

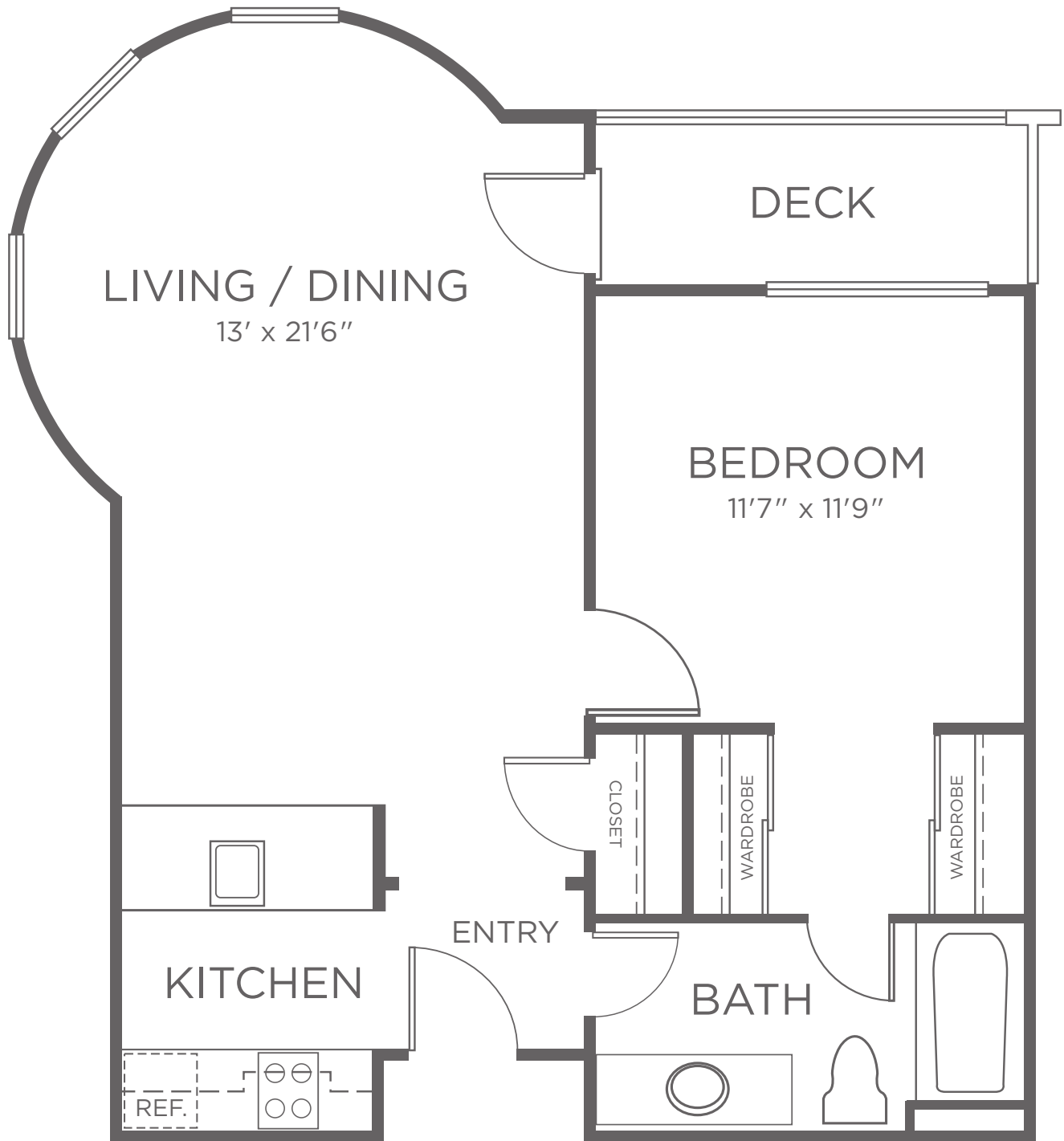




FLOOR PLAN

DEVON D

1 BEDROOM | 1 BATH
APPROXIMATELY 736 SF

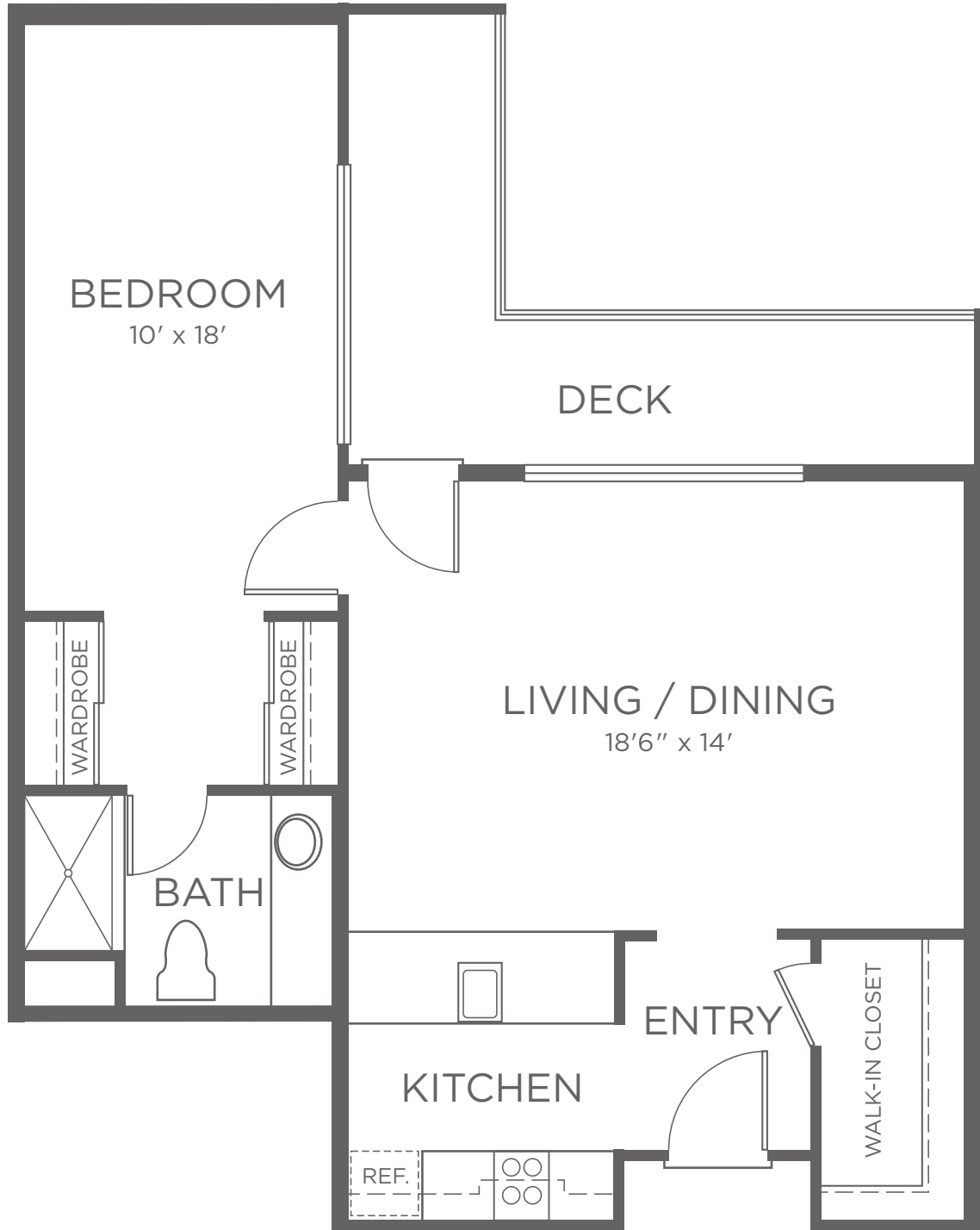




FLOOR PLAN

AVON

1 BEDROOM | 1 BATH
APPROXIMATELY 815 SF

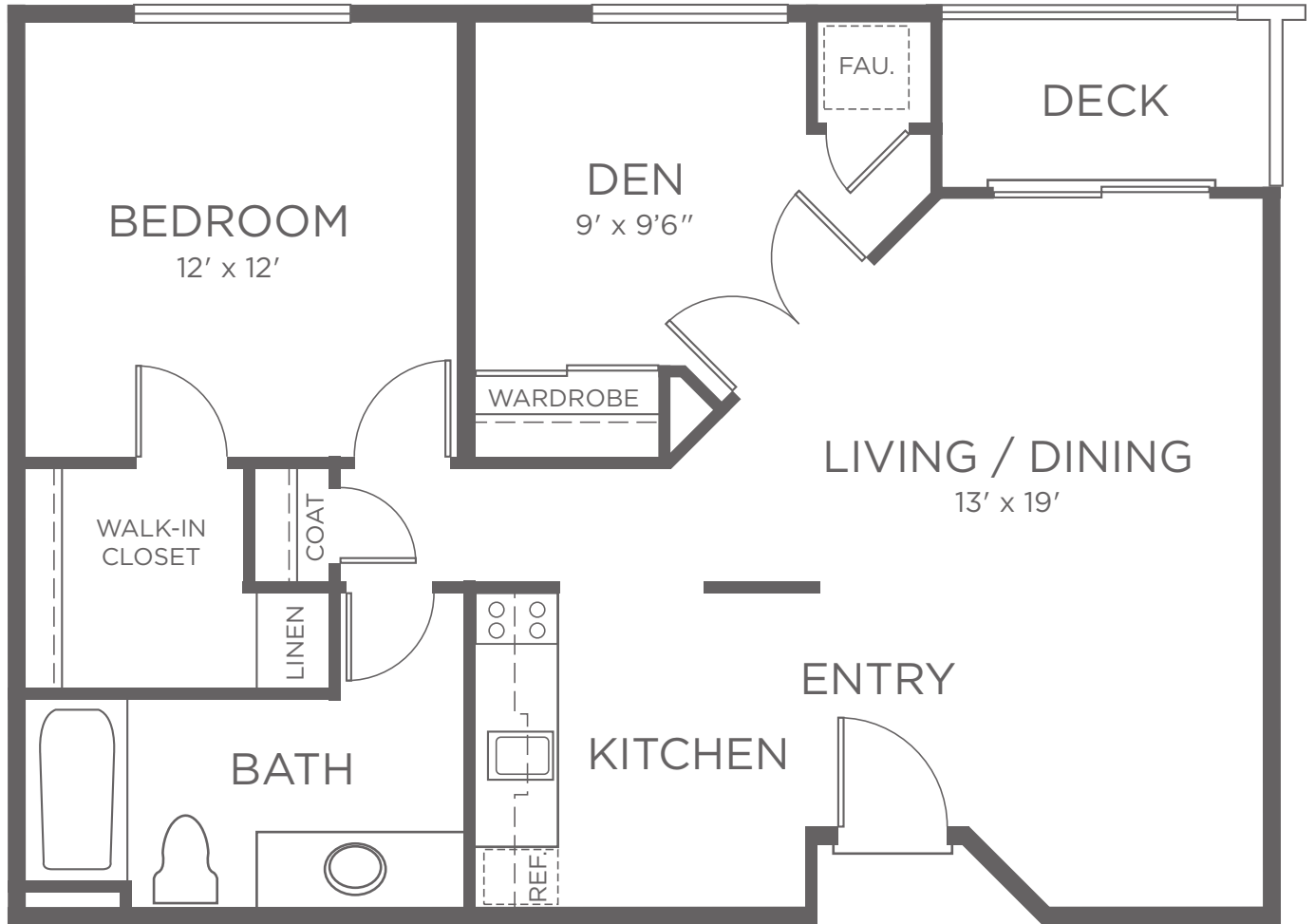




FLOOR PLAN

YORK

1 BEDROOM | 1 BATH | DEN
APPROXIMATELY 816 SF

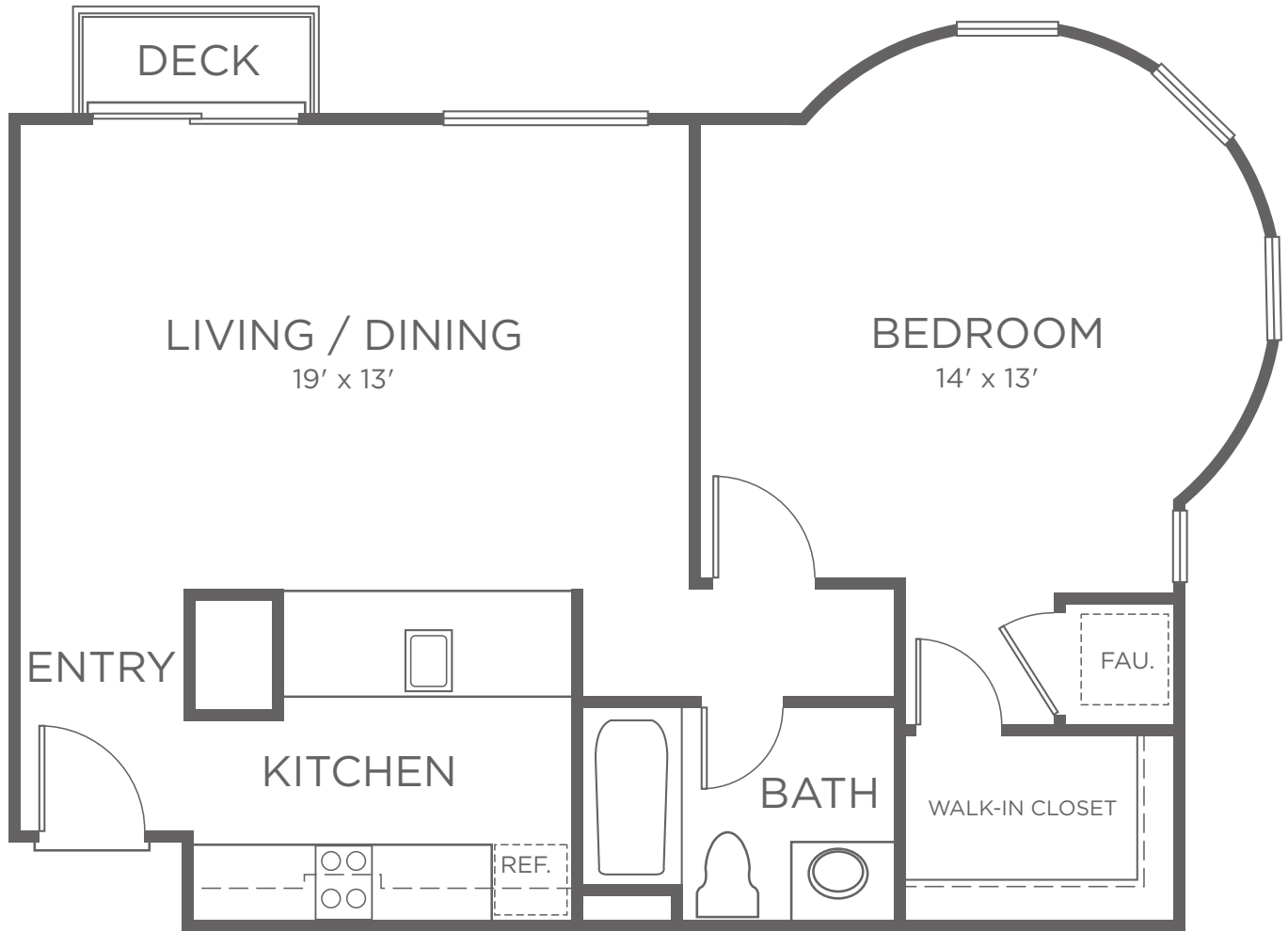




FLOOR PLAN

REGENT

1 BEDROOM | 1 BATH
APPROXIMATELY 834 SF

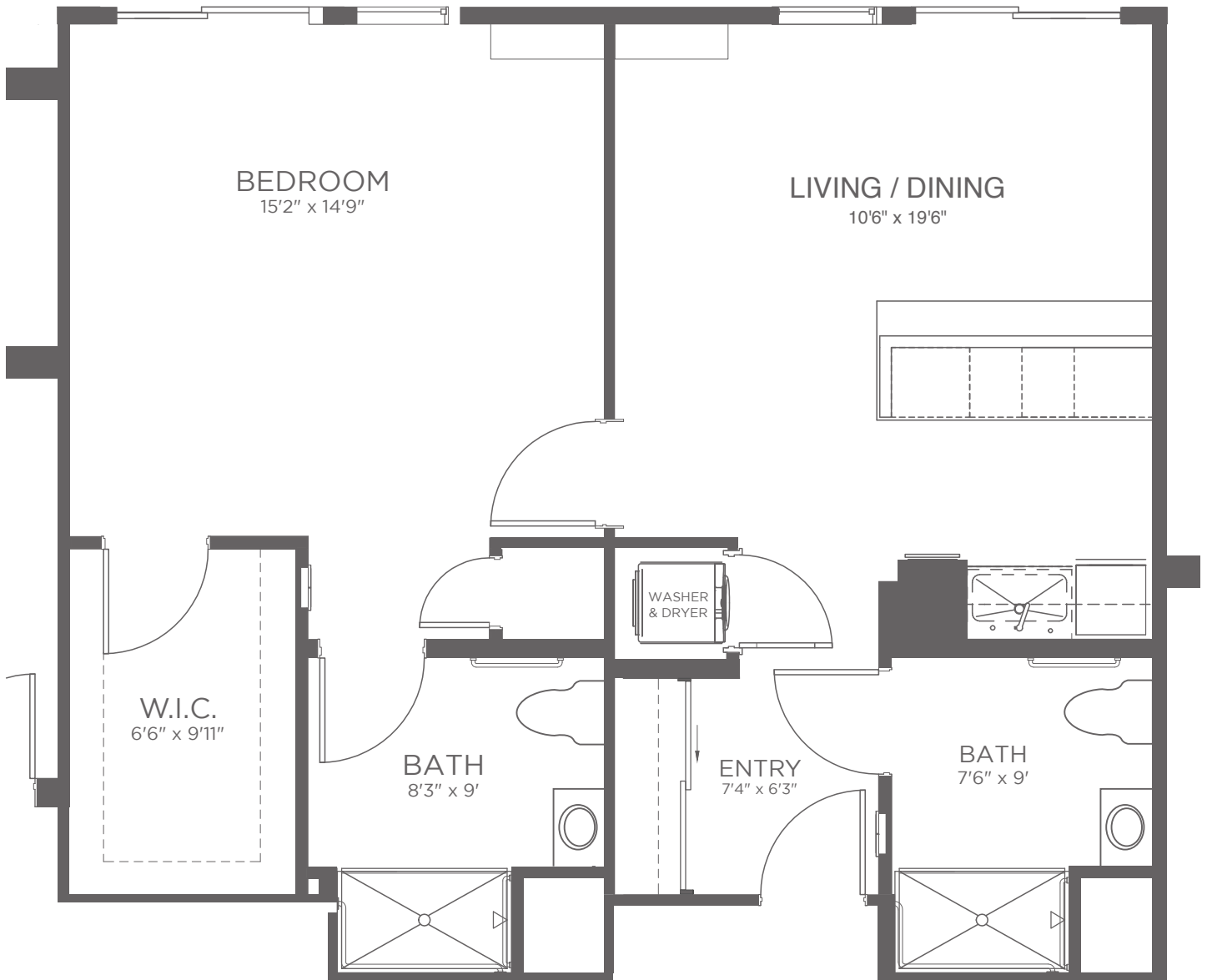




FLOOR PLAN

OXFORD A

1 BEDROOM | 2 BATH
APPROXIMATELY 812 SF

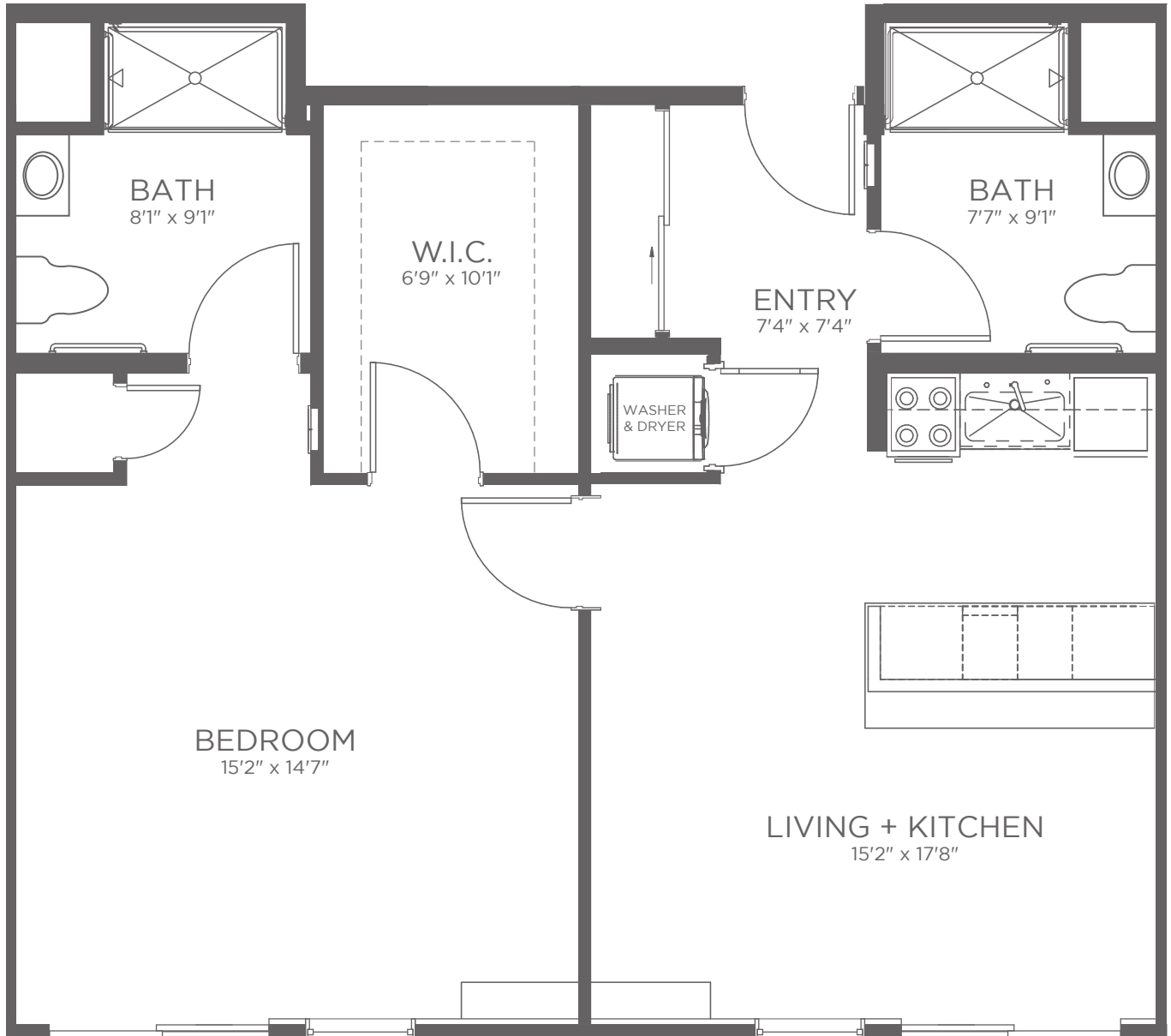




FLOOR PLAN

OXFORD B

1 BEDROOM | 2 BATH
APPROXIMATELY 812 SF



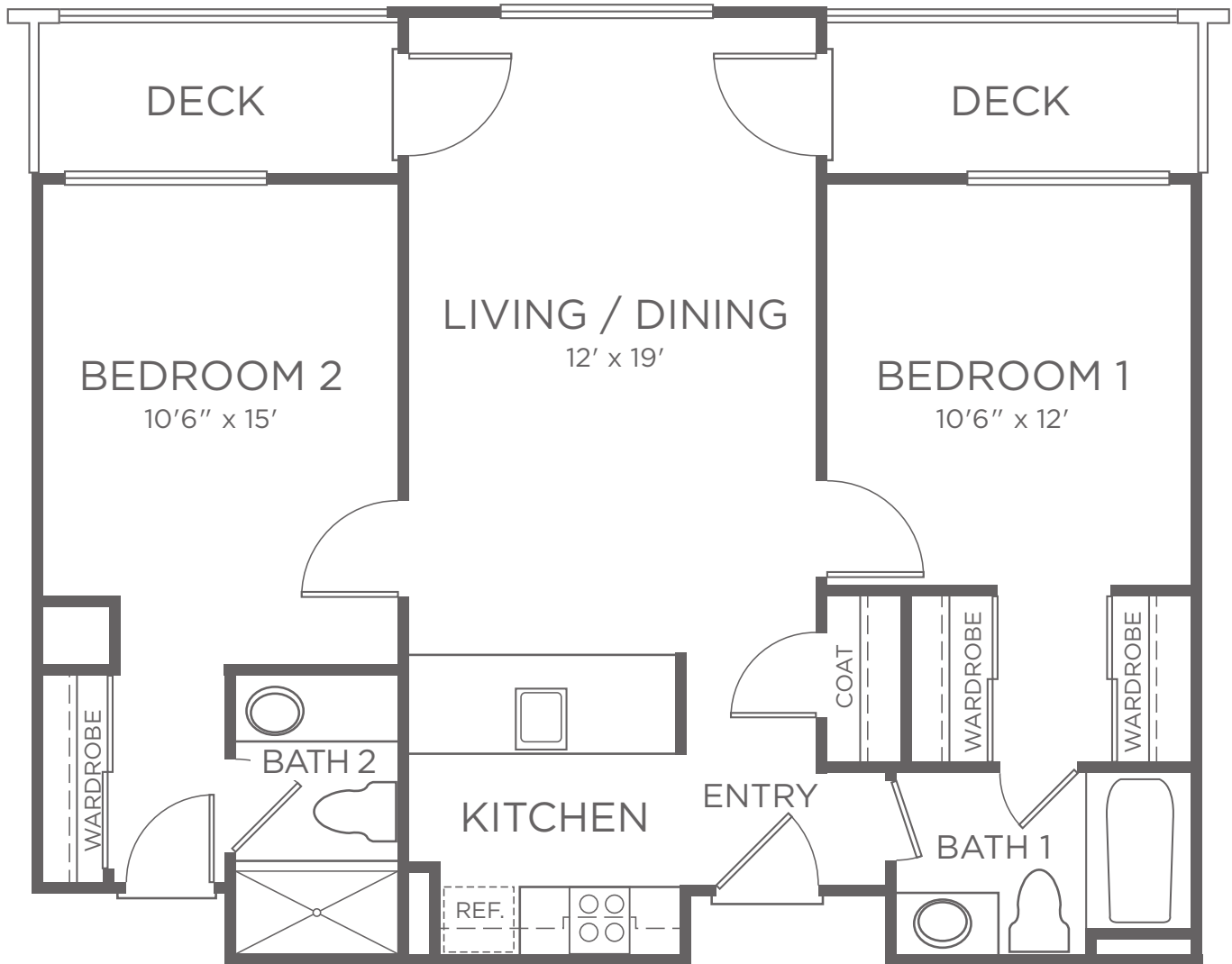


FLOOR PLAN

GREYSTONE A

2 BEDROOM | 2 BATH

APPROXIMATELY 877 SF

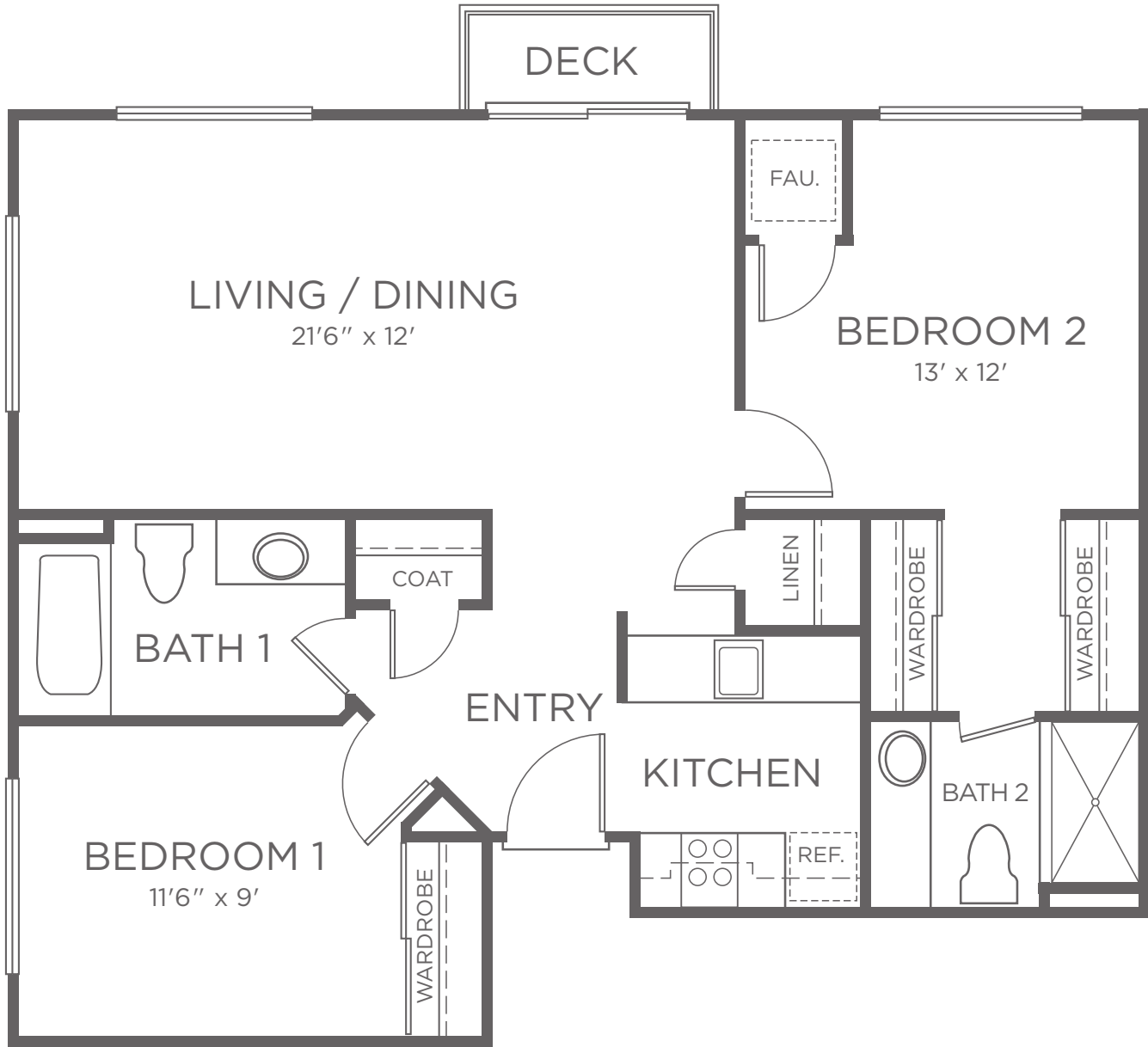




FLOOR PLAN

WINDSOR A

2 BEDROOM | 2 BATH
APPROXIMATELY 925 SF

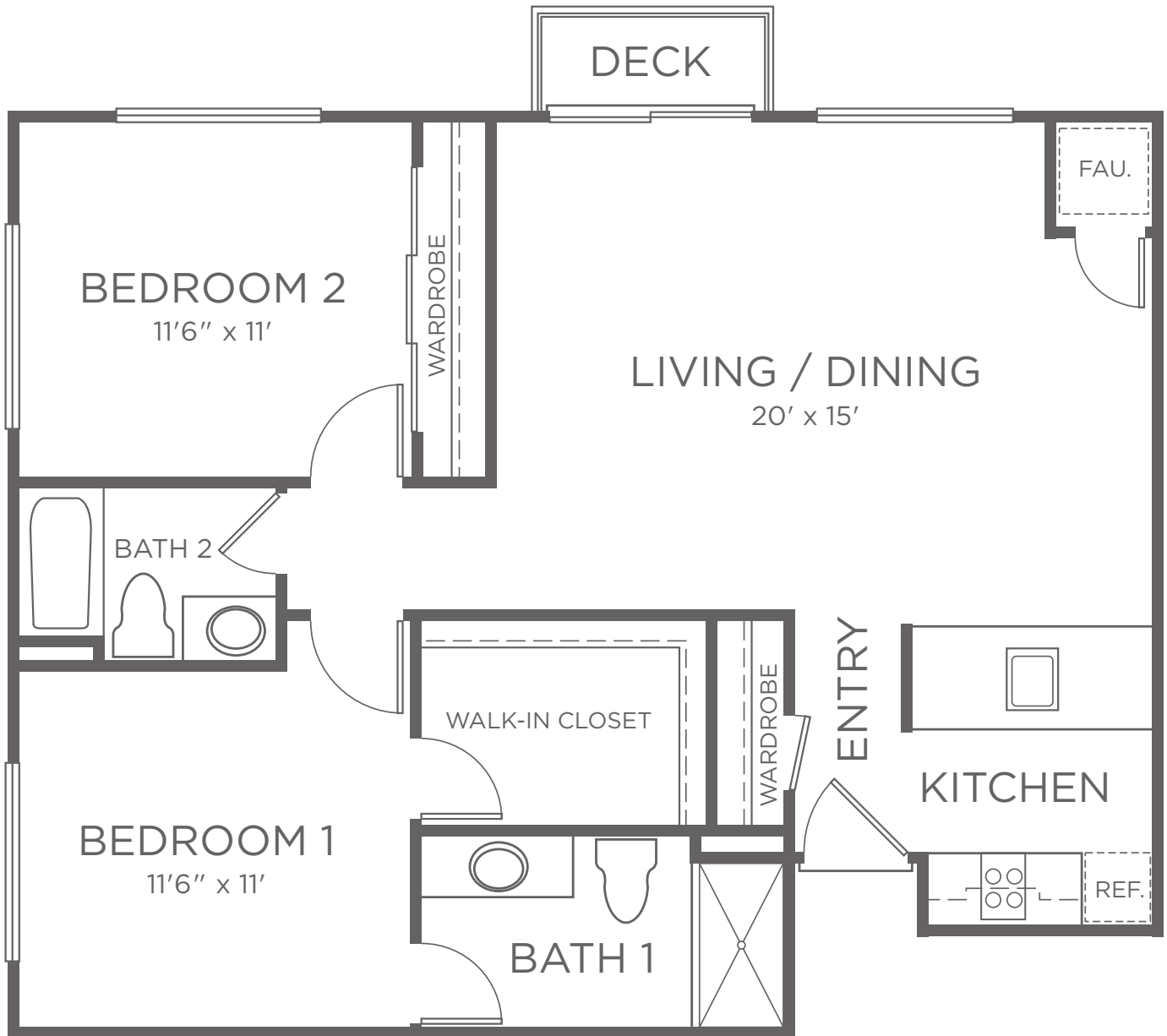




FLOOR PLAN

KENT

2 BEDROOM | 2 BATH
APPROXIMATELY 955 SF

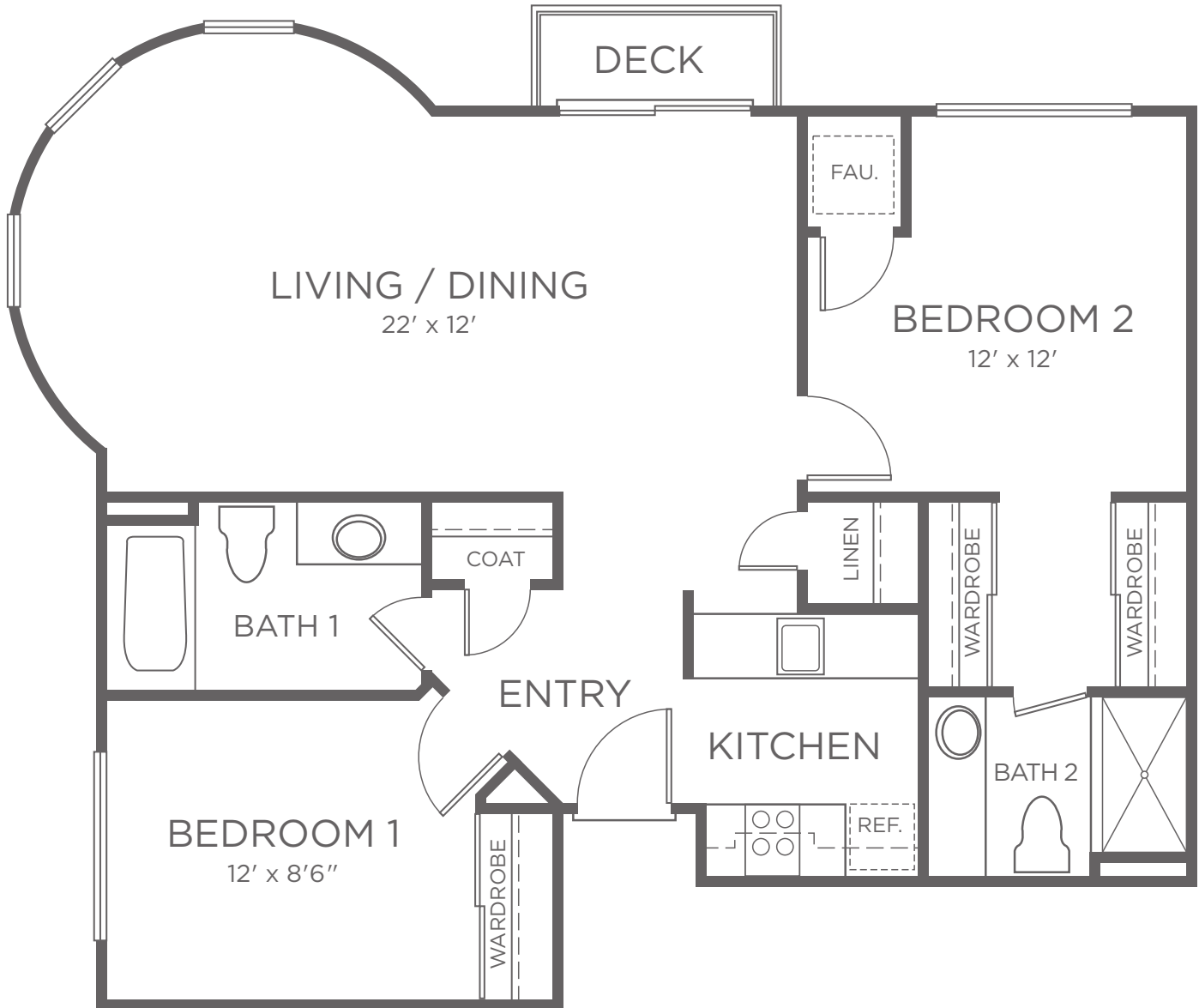




FLOOR PLAN

WINDSOR B

2 BEDROOM | 2 BATH
APPROXIMATELY 962 SF

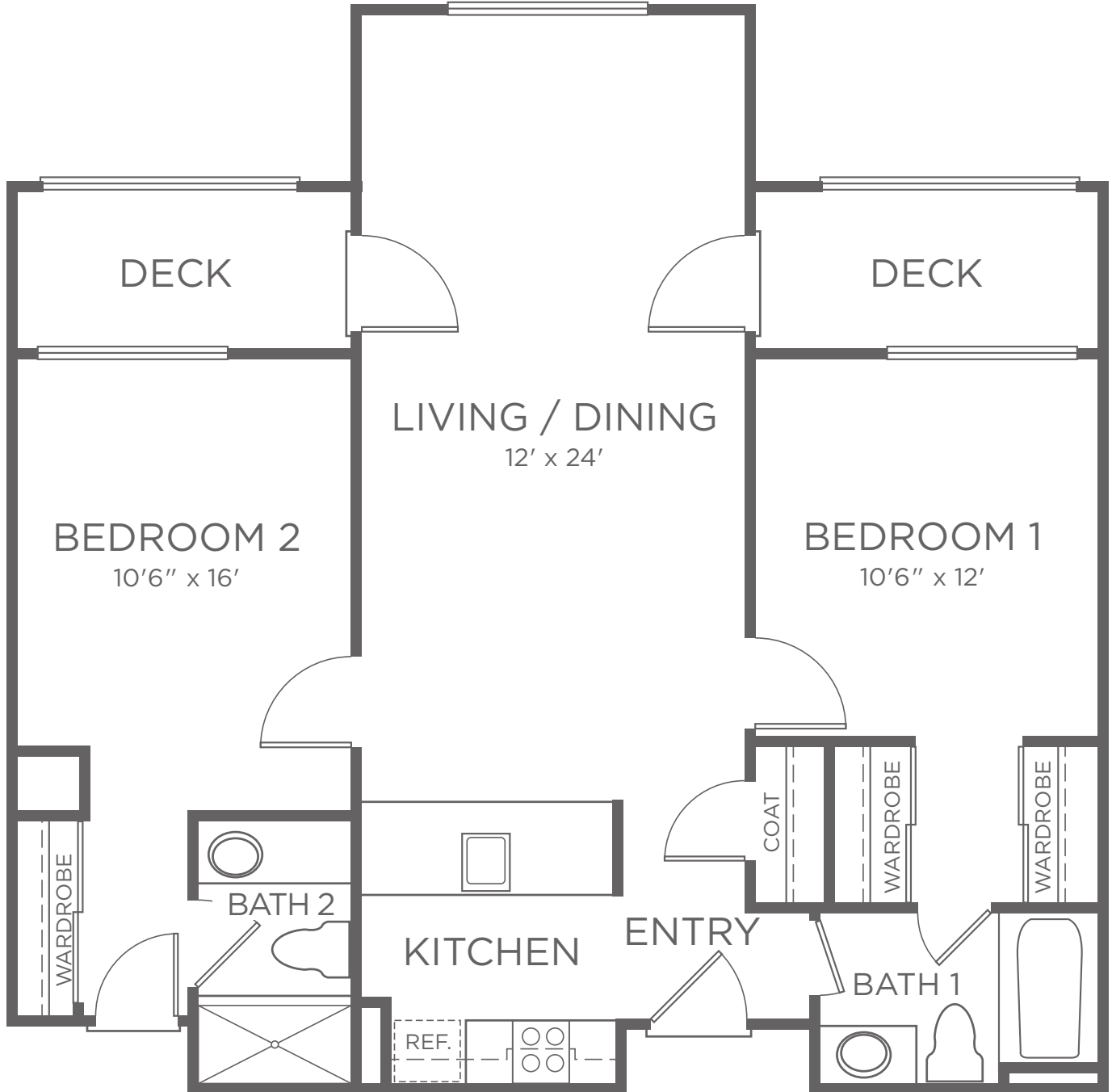




FLOOR PLAN

GREYSTONE B

2 BEDROOM | 2 BATH
APPROXIMATELY 966 SF





FLOOR PLAN

WESTON

2 BEDROOM | 2 BATH

APPROXIMATELY 1,316 SF

